

\

**NEW ZEALAND
EXPLORATION 15 day**

March 2026

Daily Summary

Day 1 - Monday, 23 March 2026

- Welcome to Auckland! On arrival you will be transferred to your accommodation
- Stay at Adina Apartment Hotel Auckland, Britomart - Premium Motel/Apartment - 1 night

Day 2 - Tuesday, 24 March 2026

- Waiheke Island Return Ferry
- This morning take the ferry over to Waiheke Island - Ultimate Island Escape
- Stay at The Boatshed - Boutique Lodge - 2 nights

Day 3 - Wednesday, 25 March 2026

- Ananda Tours - Gourmet Food and Wine Tour Waiheke Island

Day 4 - Thursday, 26 March 2026

- This morning take the ferry back to Auckland, collect your vehicle and drive to Waitomo - Cave Country
- Stay at Waitomo Caves Guest Lodge B&B - B&B - 1 night

Day 5 - Friday, 27 March 2026

- Spellbound Glowworm Caves - Glowworm and Cave Explorer
- After your tour make your way to Rotorua - Discover the Geothermal Wonderland
- Stay at Regent of Rotorua - 4 Star Hotel - 2 nights

Day 6 - Saturday, 28 March 2026

- Mitai Maori Village - Māori Cultural Evening Experience - Includes Traditional Māori Feast (Hāngi)
- Mount Tarawera Volcanic Buried Village Entry

Day 7 - Sunday, 29 March 2026

- Return your rental vehicle at ROT airport and fly to Christchurch - transfer on arrival
- Stay at Distinction Christchurch Hotel - 4 Star Hotel - 1 night

Day 8 - Monday, 30 March 2026

- You will be transferred to the railway station to board the TranzAlpine to Greymouth
- TranzAlpine Train - Christchurch to Greymouth
- Collect your rental vehicle and drive to Franz Josef Village - Glacier Country
- Stay at Rainforest Retreat - 4 Star Hotel - 1 night

Day 9 - Tuesday, 31 March 2026

- Helicopter Line - Franz Josef & Fox Glacier - 40 Minute Helicopter Flight - Mountain Scenic Spectacular
- After your tour, make your way to Wanaka - Jewel of the Southern Alps
- Stay at Te Wanaka Lodge - B&B - 2 nights

Day 10 - Wednesday, 01 April 2026

- Wanaka Wine Tours - Classic Wine Trail - Includes Lunch

Day 11 - Thursday, 02 April 2026

- Make your way to Queenstown - Adventure Capital
- Stay at Queenstown Park Boutique Hotel - 5 Star Hotel - 2 nights

Day 12 - Friday, 03 April 2026

- Enjoy your free day at leisure in Queenstown
- Real NZ - TSS Earnslaw - Vintage TSS Earnslaw Cruise and Gourmet Buffet Dinner at Walter Peak

Daily Summary

Day 13 - Saturday, 04 April 2026

- Today you will be transferred to Doubtful Sound
- Stay at Real NZ - Doubtful Sound - Overnight Cruise/Tour - 1 night

Day 14 - Sunday, 05 April 2026

- You will be transferred back to Queenstown
- Stay at The Glebe Apartments - Premium Motel/Apartment - 1 night

Day 15 - Monday, 06 April 2026

- "Haere rā" Goodbye! After an amazing holiday, return your vehicle prior to your onward flight

Day 1 - Monday, 23 March 2026

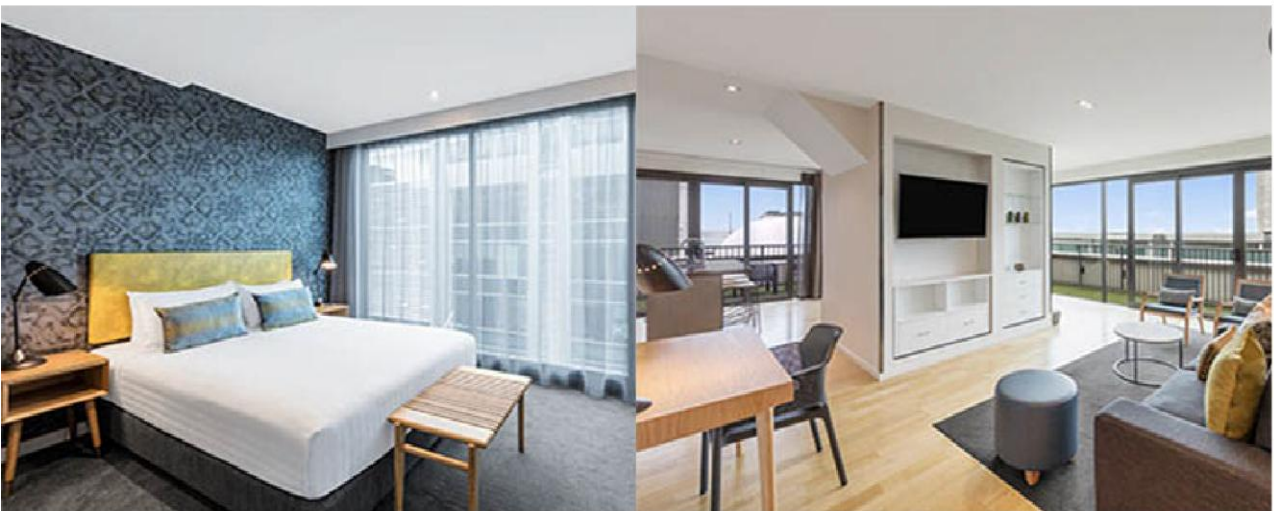
Welcome to Auckland! On arrival you will be transferred to your accommodation

Known as the "City of Sails," Auckland is famous for its stunning waterfront, diverse culture, and vibrant urban life. Located between Waitemata and Manukau Harbours, it features numerous islands and scenic coastlines along the Tasman Sea and Pacific Ocean. The city's skyline showcases iconic structures amid lush green hills and volcanic cones. As New Zealand's economic and cultural hub, Auckland boasts a thriving arts scene, innovative cuisine, and a strong community spirit.



Stay at Adina Apartment Hotel Auckland, Britomart - Premium Motel/Apartment - 1 night

Experience the perfect blend of modern comfort and urban convenience at Adina Apartment Hotel Auckland Britomart. Nestled in the lively Britomart precinct and just a short stroll from the picturesque Quay Park waterfront, this contemporary hotel offers spacious, apartment-style accommodations with fully equipped kitchens, ideal for both short and long stays. Enjoy effortless access to Auckland's top dining, shopping, and entertainment venues, and take in breathtaking views of the city skyline. Located in Auckland's CBD, just 1km from the iconic Sky Tower, the prime location allows you to explore Britomart's chic designer boutiques, savor diverse dining options and wander through High Street's charming cobblestone alleys. With modern amenities including gym, lobby bar, café and free Wi-Fi, Adina Apartment Hotel Auckland, Britomart is your gateway to discovering the best of Auckland while enjoying the comforts of a home away from home.



Day 2 - Tuesday, 24 March 2026

Waiheke Island Return Ferry

This stunning island just off the Auckland coast boasts 92 square kms of beautiful beaches, vineyards, olive groves, native bush and laid back seaside villages. It's a great day out from Auckland as well as a superb holiday destination or a weekend getaway. The ferries are stable fast jet propelled 'Quickcats' that are large enough to take 300 people. Seating is spread over 3 levels. The top deck being outside and the lower two decks have Air conditioning and licensed bar.



This morning take the ferry over to Waiheke Island - Ultimate Island Escape

Just a 40-minute ferry ride from Auckland, Waiheke Island is nestled in the picturesque Hauraki Gulf. Surrounded by crystal-clear waters, the island is known for its rolling hills, lush vegetation, and rugged coastline. With its temperate climate and sheltered bays, Waiheke offers a tranquil retreat, where visitors can enjoy the serene beauty of its landscapes. Famous for its vineyards and breathtaking views, Waiheke is a peaceful escape that feels a world away from the bustling city.



Stay at The Boatshed - Boutique Lodge - 2 nights

The Boatshed, a small luxury hotel perched just five minutes above the pristine Oneroa Beach, epitomizes casual elegance perfectly suited to its stunning seaside location. Inspired by early 1900s boatsheds, this chic, architecturally designed retreat offers exquisitely appointed suites, each featuring panoramic ocean views, open fires and refined design details. Guests can savor relaxed all-day dining at the hotel, benefiting from its extensive kitchen gardens which provide fresh, daily produce. The property boasts a range of alfresco dining options, enhancing the experience with beautiful bay and ocean vistas. The hotel's ambiance is complemented by its eclectic mix of nearby award-winning vineyards, sophisticated restaurants, art studios and golden, sandy beaches. With a focus on privacy and discreet service, The Boatshed provides a sophisticated yet relaxed atmosphere, ideal for style-savvy travelers. Enjoy the serene environment, wide timber decks, and captivating views of Oneroa Bay as you unwind by the open log fire. Your stay here promises a unique blend of luxury and local charm, showcasing one of New Zealand's finest small hotels.



Day 3 - Wednesday, 25 March 2026

Ananda Tours - Gourmet Food and Wine Tour Waiheke Island

Your guide will meet you at Matiatia Ferry Terminal on Waiheke Island to embark on a delightful gourmet food and wine journey. Experience succulent fresh oysters, award-winning olive oil, and other locally-produced delicacies paired with wines from the island's top boutique vineyards. Throughout the tour, your guide will offer entertaining and informative commentary. You'll visit an acclaimed olive oil mill, followed by two vineyards offering gourmet tastings to compliment their wines. Indulge in treats such as Te Matuku Bay oysters, wild honey, renowned local green herb spread, and artisan cheeses. After a platter lunch at one of the island's top vineyard restaurants, you'll be chauffeured back to your accommodation or to catch the ferry back to Auckland.



Day 4 - Thursday, 26 March 2026

This morning take the ferry back to Auckland, collect your vehicle and drive to Waitomo - Cave Country

The Waikato region, south of Auckland, features lush, fertile landscapes and more than meets the eye. It is home to extensive underground caverns, a major tourist attraction. The charming town of Waitomo serves as the gateway to these subterranean wonders, with its famous caves showcasing nature's beauty and craftsmanship over the last hundred thousand years. Waitomo's caves are among New Zealand's most impressive natural formations, offering a unique glimpse into the region's geological history.



Stay at Waitomo Caves Guest Lodge B&B - B&B - 1 night

Waitomo Caves Guest Lodge is situated on a hillside just as you come in to Waitomo Caves Village. The guest lodge is surrounded by gardens with numerous shrubs, trees and flowers. These attract lots of bird life, including native birds, tuis, bellbirds, fantails, swallows, kingfishers and native pigeons, among others, visiting the garden at different times of the year. Because the guest lodge is on a hillside there are lovely views over the surrounding countryside. The buildings face towards the Waitomo river valley with native forest on the slopes behind. From here it is only a short walk to the visitor centre and village restaurants.



Day 5 - Friday, 27 March 2026

Spellbound Glowworm Caves - Glowworm and Cave Explorer

Enjoy a scenic van ride through a captivating limestone-studded farm, leading you to the stunning Mangawhikau Gorge. Here, explore the famous Glowworm Cave, where a peaceful boat ride glides you beneath a canopy of twinkling glowworms, creating an unforgettable spectacle. Continue your adventure with a walk along an ancient dry riverbed to Te Ana o Te Atua, the Cave of the Spirit. Inside, be awestruck by the intricate limestone formations, fascinating fossils, and dramatic views of the sky through natural sinkholes. This unique journey offers a blend of natural beauty and wonder, showcasing nature at its most remarkable.



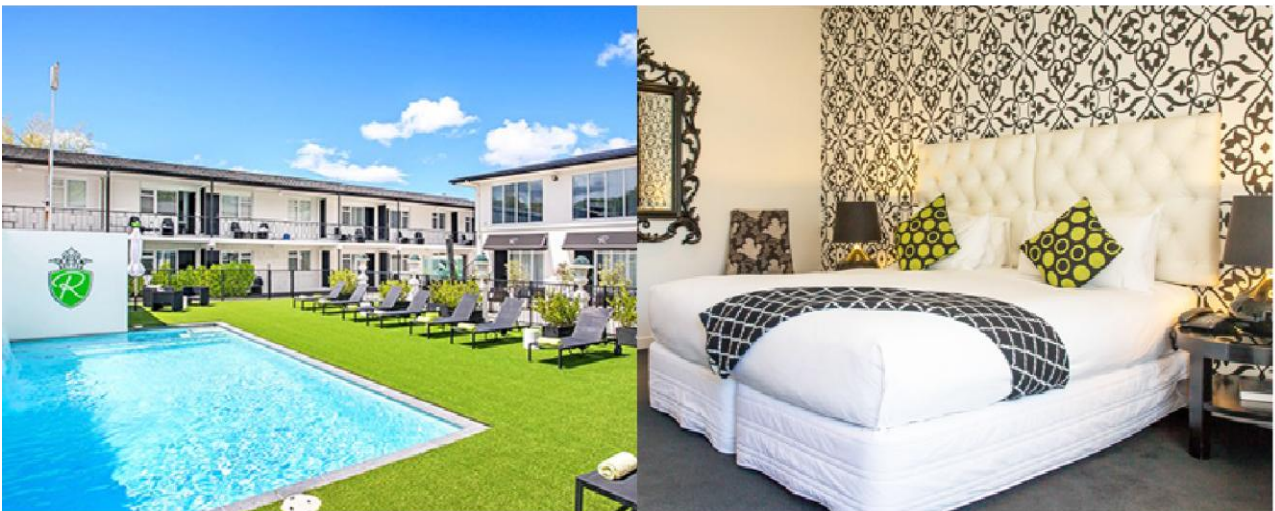
After your tour make your way to Rotorua - Discover the Geothermal Wonderland

Rotorua is nestled among vibrant geothermal landscapes, featuring steaming lakes, bubbling mud pools, and impressive geysers that showcase some of the planet's most extraordinary natural phenomena. This region is a cultural cornerstone for the Maori, whose deep connection to the land is evident in their traditions. Rotorua is also renowned for its unique geology, with a rich volcanic history contributing to breathtaking scenery. The area boasts stunning forests, serene lakes, and diverse flora and fauna, making it a true gem.



Stay at Regent of Rotorua - 4 Star Hotel - 2 nights

Escape to The Regent of Rotorua, Rotorua's newest designer 5 star Boutique Hotel & Spa offering stylish luxury accommodation, restaurant, wine & cocktail bar, all with a touch of glamour. An oasis of understated hip contemporary elegance and comfort amidst the exciting attractions and experiences Rotorua has to offer. Each of the rooms and suites in our central city luxury boutique hotel is exquisitely designed featuring dramatic contemporary decor with a touch of glamour and comfort. An outdoor heated swimming pool, spa treatment area, thermal mineral pool and mini gym make the Regent of Rotorua the perfect Rotorua escape.



Day 6 - Saturday, 28 March 2026

Mitai Maori Village - Māori Cultural Evening Experience - Includes Traditional Māori Feast (Hāngi)

An evening at Mitai will give you an authentic introduction to Maori culture leaving you amazed and in awe. Be enthralled by the natural bush setting, see warriors in traditional dress paddle an ancient warrior canoe (waka) down the Wai-o-whiro stream. Watch your traditionally cooked hangi meal being lifted from the ground. During the cultural performance, you'll learn about the past, carvings and ta moko (tattoo art). Be captivated by the displays of weaponry and combat, coupled with the grace and beauty of the poi dance. You'll be amazed by the spine tingling haka finale. Enjoy an evening walk through the forest visiting the old village site and discovering the sacred natural spring Te Puna Tapu a Tuhoe. End the evening in awe of the glow worms lighting the banks of the forest.



Mount Tarawera Volcanic Buried Village Entry

The eruption of Mount Tarawera is regarded as New Zealand's most devastating natural disaster, violently destroying the breathtaking Pink and White Terraces, once hailed as the eighth wonder of the world. For more than four harrowing hours, the tranquil village endured relentless bombardment from rocks, ash, and mud. Nearly 120 years later, the excavated village offers a poignant insight into the chaos and destruction of that tragic night. The Buried Village features an award-winning museum, recreated pioneer cottage, Māori whare and various archaeological sites. Gain a genuine understanding of the lives and struggles faced by the Te Wairoa community -- both Māori and European -- during this catastrophic event. As you explore the grounds, you can view the remnants of historic buildings, including the blacksmith's shop, flour mill, barman's house and the Rotomahana Hotel.



Day 7 - Sunday, 29 March 2026

Return your rental vehicle at ROT airport and fly to Christchurch - transfer on arrival

Christchurch is the city of renewal, where urban innovation meets heritage. Nestled between the majestic Southern Alps and the expansive Canterbury Plains, this dynamic city offers fresh experiences at every turn. Expect vibrant street art, cutting-edge projects, and a thriving hospitality scene amid lush green spaces. Known as "The Garden City", Christchurch blends modern architecture with some of New Zealand's oldest buildings, featuring inviting gardens and scenic parks that welcome all who seek to explore its charm.



Stay at Distinction Christchurch Hotel - 4 Star Hotel - 1 night

The Distinction Christchurch Hotel offers a sophisticated urban escape, effortlessly combining modern luxury with a warm, inviting atmosphere. Located in the heart of Cathedral Square, it's within walking distance of top attractions like the Avon River, Christchurch Botanical Gardens, and Cashel Mall. The hotel's stylish rooms boast sleek, contemporary design and cutting-edge amenities, ensuring the highest level of comfort. Savour delectable dishes and signature cocktails at the Gumption Restaurant & Bar, or stay fit in the fully-equipped gym. With complimentary Wi-Fi and exceptional service, the hotel is the perfect retreat for exploring this vibrant city.



Day 8 - Monday, 30 March 2026

You will be transferred to the railway station to board the TranzAlpine to Greymouth

Greymouth, the largest town on the West Coast, is located between the rugged Southern Alps and the Tasman Sea. This striking location boasts dramatic coastal cliffs and lush rainforests, making it a gateway to breathtaking natural landscapes. The area is renowned for its rich geological history, including unique rock formations and significant fossil sites. Additionally, Greymouth's waters are frequented by Hector's dolphins and various seabirds, reflecting the diverse marine life that thrives along this picturesque coastline.



TranzAlpine Train - Christchurch to Greymouth

Rated as one of the top six scenic train journeys in the world, the famous Tranz Alpine train will take you deep into the heartland of the South Island ... a coast to coast journey through some of the world's most extreme and beautiful scenery. The Tranz Alpine winds its way over massive viaducts and through spectacular gorges and river valleys before tracking slowly across the country's greatest mountain range, the Southern Alps. It stops in the heart of the Southern Alps at Arthur's Pass before following rivers, skirting lakes, before descending through lush beech forest to the Tasman Sea and the town of Greymouth.



Collect your rental vehicle and drive to Franz Josef Village - Glacier Country

Franz Josef village is just ten minutes from the iconic Franz Josef Glacier. Located within Westland National Park on New Zealand's West Coast, this remarkable glacier uniquely descends from the Southern Alps to only 200 meters above sea level, surrounded by lush temperate rainforest. Stretching 12 kilometers in length, the glacier terminates 19 kilometers from the Tasman Sea. It showcases a dynamic cycle of advance and retreat, influenced by the balance of meltwater and snowfall feeding its ice field.



Stay at Rainforest Retreat - 4 Star Hotel - 1 night

Rainforest Retreat is located amongst the Southern Alps close to Franz Josef Glacier and countless scenic spots, Deluxe Tree Lodges offer a unique stay, privately tucked amidst lush rainforest, each featuring spacious decks that allow you to fully embrace the beauty of nature. Inside, enjoy the comfort of luxurious beds with premium linens, a large en-suite bathroom with a rain shower and underfloor heating, and a fully equipped kitchenette for your convenience. With modern amenities throughout, this serene haven provides the perfect base for your wild West Coast adventure.



Day 9 - Tuesday, 31 March 2026

Helicopter Line - Franz Josef & Fox Glacier - 40 Minute Helicopter Flight - Mountain Scenic Spectacular

Experience both Franz Josef Glacier & Fox Glacier by air on a premier 40-minute helicopter trip! Land on the snow plains of a Glacier, jump out and take it all in. Franz Josef and Fox Glaciers are two of New Zealand's largest glaciers. From above you can view and appreciate the incredible natural phenomenon, towering ice formations and vast size of the glaciers. Top it off with a snow landing and stand on the ancient ice of the glaciers. You'll also fly over the Tasman Glacier on the eastern side of the Southern Alps and close to Aoraki/Mount Cook, New Zealand's highest peak.



After your tour, make your way to Wanaka - Jewel of the Southern Alps

Wānaka is located on the southern shores of Lake Wānaka, embraced by the majestic Southern Alps. The crystal-clear waters reflect the stunning peaks of Mount Aspiring National Park, as well as the famous lone tree that has become a symbol of the town. This picturesque setting, with its glacial valleys and rugged mountains, invites exploration and appreciation of the pristine wilderness. Wānaka's breathtaking landscapes make it a captivating destination for nature lovers.



Stay at Te Wanaka Lodge - B&B - 2 nights

Located in the stunning Southern Alps of New Zealand, Te Wanaka Lodge offers a serene retreat just a short walk from Lake Wanaka. This European-style bed and breakfast blends rustic charm with modern comforts, providing cozy rooms and breathtaking mountain views. Delight in personalized service and indulge in a scrumptious breakfast, served at an antique dining table. Relax by the log fire, unwind in the cedar hot tub, or explore the outdoors with hiking in summer and skiing in winter. Te Wanaka Lodge is the perfect base for both adventure and relaxation.



Day 10 - Wednesday, 01 April 2026

Wanaka Wine Tours - Classic Wine Trail - Includes Lunch

The accent is on leisure as you immerse yourself into the flavours and sights of this vineyard paradise. You'll be taken to the little places that are quietly making a big name for themselves with their dedication to produce the best possible wine. Here you'll get up close and personal with the vineyard owners and possibly wine makers. This tour is an unhurried amble through five of the regions finest, pausing only to admire the ever-present views. Savour some of the best hand-crafted Pinot Noir in the Southern Hemisphere, along with amazing aromatics such as Riesling, Pinot Gris, Sauvignon Blanc and Gewurztraminer, while certainly not forgetting the delicious cool-climate Chardonnays and the vibrant, ever popular Rosé. If that isn't enough to whet your appetite, for lunch savour a chef's selection of five barrel-cooked dishes, each paired with an award-winning wine.



Day 11 - Thursday, 02 April 2026

Make your way to Queenstown - Adventure Capital

Queenstown, located on the shores of Lake Wakatipu and surrounded by the magnificent Southern Alps, is New Zealand's most celebrated destination. Offering a wealth of accommodation to suit all travellers, there is huge diversity in the experiences to be enjoyed - from adrenaline activities such as bungee jumps and sky diving, adventurous excursions like jet-boating and hiking through to superb golf, gourmet food and wine tours or romantic hot air ballooning.



Stay at Queenstown Park Boutique Hotel - 5 Star Hotel - 2 nights

Experience the refined elegance of Queenstown Park Boutique Hotel, your ultimate 5-star retreat for all seasons. This chic boutique hotel offers a blend of modern romance and personalized service right in the heart of New Zealand's adventure capital. Relax in designer luxury within serene parkland, where each room and suite boasts stunning views of Queenstown's majestic mountains. With effortless access to the lively town center, you'll find shopping, cafes and nightlife just steps away, all set against the stunning backdrop of Lake Wakatipu.



Day 12 - Friday, 03 April 2026

Enjoy your free day at leisure in Queenstown

Queenstown is an ideal destination for those who appreciate both nature and culture. Whether you're an outdoor enthusiast looking for tranquil lakeside walks or someone who loves to wander through local art galleries and boutique shops, this town has something for everyone. Stroll along the waterfront, take in stunning views, and discover the charm of Queenstown's lively streets. It's also perfect for families, couples, or solo travelers seeking a relaxing spot to unwind or explore at a slower pace while enjoying the fresh air and scenic surroundings.



Real NZ - TSS Earnslaw - Vintage TSS Earnslaw Cruise and Gourmet Buffet Dinner at Walter Peak

The perfect way for you to end an action packed day in and around Queenstown is to take a nostalgic cruise on the TSS Earnslaw vintage steamship along Lake Wakatipu to the Colonel's Homestead at Walter Peak Farm. Enjoy high country hospitality and a carvery style buffet, or Homestead Roast, featuring the best of New Zealand meats and along with fresh vegetables and garden salads. You may well find the house dessert specialities hard to resist! An entertaining after dinner show provides a glimpse into farming life.



Day 13 - Saturday, 04 April 2026

Today you will be transferred to Doubtful Sound

This is the deepest of all fiords. A haven with its ancient rain forest and abundant wildlife it is quite simply and unquestionably breathtaking. Practically untouched by man the physical grandeur of towering peaks, outstanding waterfalls (Browne Falls cascade 619 metres to the fiord near Hall Arm) and lack of wind create a powerful atmosphere of solitude and serenity. See Fiordland crested penguins, bottlenose dolphins and New Zealand fur seals.



Stay at Real NZ - Doubtful Sound - Overnight Cruise/Tour - 1 night

Your adventure begins with a scenic coach ride from Queenstown to Lake Manapouri, where you'll board a vessel to cross to West Arm. From there, a coach takes you through the stunning Wilmot Pass to Doubtful Sound. Upon reaching Deep Cove, board your vessel for an overnight journey, exploring secluded coves and inlets, and reaching the Tasman Sea. A nature specialist will share insights into the region's landscape and wildlife. You can kayak along the shoreline or join a small boat tour. Enjoy a three-course buffet dinner and mingle with fellow travellers at the licensed bar. After breakfast the next day, continue exploring before returning to Manapouri and traveling back to Queenstown.



Day 14 - Sunday, 05 April 2026

You will be transferred back to Queenstown

For those staying a bit longer, Queenstown offers more to uncover. If you enjoy outdoor adventures at your own pace, explore the town's walking and cycling paths, where you can connect with nature while escaping the bustle of everyday life. It's also a great destination for photography lovers, offering picturesque views at every corner - whether it's a hidden park, river path, or peaceful lakeside spot. Queenstown is perfect for people who want to enjoy serene moments, whether alone, with friends, or family, while soaking up the calm and beauty of the town.



Stay at The Glebe Apartments - Premium Motel/Apartment - 1 night

Experience The Glebe Apartments Queenstown, where luxurious alpine living meets contemporary elegance. Perfectly situated in the vibrant heart of Queenstown, our exclusive, fully self-contained apartments offer stunning panoramic views of the majestic mountains and serene lake, setting the stage for an unforgettable stay. Each apartment is meticulously designed with sleek modern finishes and open-plan living spaces and access to premium amenities such as a Courtyard BBQ and complimentary WiFi. Enjoy the ease of being just steps away from premier dining, shopping and thrilling adventure experiences.



Day 15 - Monday, 06 April 2026

"Haere rā" Goodbye! After an amazing holiday, return your vehicle prior to your onward flight

Today we say farewell. There may be time for some last minute excursions or shopping before you head home. We know you will enjoy your New Zealand holiday and our promise is to make your travels through New Zealand as hassle-free and hospitable as possible - ensuring that today you leave with a camera full of photos, and huge smiles on your faces when recalling your time in New Zealand! Have a great homeward journey, farewell and hope to see you again soon in Aotearoa, New Zealand.



Inclusions

Transport

Car Hire

- Vehicle Class, Vehicle Type or Similar

Includes:

- Premium Cover (reduces the Damage Liability Fee, offering a zero excess)
- Third Party Cover
- Airport Premium Location Fees
- Unlimited kilometers
- Local Goods and Services Tax (GST)
- Additional Driver Charges
- Wheels, Windscreen and Iridescences

Excludes:

- Snow Cover
- Young Driver Surcharge (under 25)
- Fuel used and other optional extras
- GPS Unit (Navigational System)
- One way fees (for 1-2 day rentals)

Driver's License: For the main driver and any additional driver, you must present a current Driver's License printed in English or an [International Driver's License](#).

Credit Card: A valid Credit Card and or Visa/Mastercard Debit Card in Driver's name who must be present, the card number must be embossed.

Security Deposit: When you arrive at the rental location, you will be asked to leave a deposit against your rental of NZ\$200. Deposit will be used for extra charges (e.g. fuel missing at return, extra-day, extra-mileage, toll roads etc.).

Terms and Conditions: All rentals are subject to the Europcar Terms and Conditions on the Rental Agreement. Please accept these terms and conditions before renting with Europcar www.europcar.co.nz/terms-and-conditions/new-zealand

Ferry

- Waiheke Island Return Ferry

Train

- TranzAlpine Train - Christchurch to Greymouth

Accommodation

- Auckland: Adina Apartment Hotel Auckland, Britomart, Premier Studio Apartment - Premium Motel/Apartment - 1 night
- Waiheke Island: The Boatshed, The Bridge Suite - Includes Breakfast - Boutique Lodge - 2 nights
- Waitomo: Waitomo Caves Guest Lodge B&B, Lodge Room - Includes Breakfast - B&B - 1 night
- Rotorua: Regent of Rotorua, Boutique Suite - 4 Star Hotel - 2 nights
- Christchurch: Distinction Christchurch Hotel, Classic King Room - 4 Star Hotel - 1 night
- Franz Josef: Rainforest Retreat, Deluxe Tree Lodge - 4 Star Hotel - 1 night
- Wanaka: Te Wanaka Lodge, Garden Cottage Room - Includes Breakfast - B&B - 2 nights
- Queenstown: Queenstown Park Boutique Hotel, Remarkables Junior Suite - Includes Breakfast, Pre-Dinner Drinks and Canapes - 5 Star Hotel - 2 nights
- Queenstown: Real NZ - Doubtful Sound, Doubtful Sound Overnight Cruise and Coach From Queenstown - Overnight Cruise/Tour - 1 night
- Queenstown: The Glebe Apartments, 1 Bedroom Apartment - Courtyard - Premium Motel/Apartment - 1 night

Activities

- Waiheke Island: Gourmet Food and Wine Tour Waiheke Island
- Waitomo: Glowworm and Cave Explorer
- Rotorua: Māori Cultural Evening Experience - Includes Traditional Māori Feast (Hāngi)
- Rotorua: Mount Tarawera Volcanic Buried Village Entry
- Franz Josef: 40 Minute Helicopter Flight - Mountain Scenic Spectacular
- Wanaka: Classic Wine Trail - Includes Lunch
- Queenstown: Vintage TSS Earnslaw Cruise and Gourmet Buffet Dinner at Walter Peak

Quote

US\$ 7,435.00 per person at today's exchange rates- HIGH season 2026

(Based on a touring party of 2 people)