

Month of departure: February 2026

Wilderness Adventure 16 day

Daily Summary

Day 1 - Monday, 23 February 2026

- Welcome to Auckland! On arrival you will be transferred to your accommodation
- Stay at Oaks Auckland (formerly Nesuto Stadium) - Premium Motel/Apartment - 2 nights

Day 2 - Tuesday, 24 February 2026

- Bush and Beach - Wilderness Experience Nature Tour

Day 3 - Wednesday, 25 February 2026

- Drive to Waitomo (approximately 190 km, 2 hours 30 mins)
- This morning collect your rental vehicle and make your way to Waitomo - Cave Country
- Waitomo Glow Worm Caves - Triple Cave Combo - Glowworm, Ruakuri and Aranui Caves
- Stay at Rural Tours. Country Lifestyle Experiences - Unique Stay - 1 night

Day 4 - Thursday, 26 February 2026

- This morning travel approximately 2 hours to Tongariro
- Stay at Tongariro Crossing Lodge - 3 Star Hotel - 2 nights

Day 5 - Friday, 27 February 2026

- Adrift Tongariro - Half Day Tongariro Alpine Guided Group Walk

Day 6 - Saturday, 28 February 2026

- Drive to Wellington (approximately 345 km, 4 hours 30 mins)
- Travel to Wellington - The Arts Capital
- Stay at Copthorne Hotel Oriental Bay Wellington - 4 Star Hotel - 1 night

Day 7 - Sunday, 01 March 2026

- Return your rental vehicle at Wellington Airport and fly to Nelson
- Drive to Abel Tasman (approximately 60 km, 1 hour 15 mins)
- On arrival into Nelson collect your rental vehicle and travel to Abel Tasman National Park - A National Treasure
- Stay at Awaroa Lodge - 4 Star Hotel - 2 nights

Day 8 - Monday, 02 March 2026

- Enjoy your free day at leisure in Abel Tasman National Park

Day 9 - Tuesday, 03 March 2026

- Drive to Punakaiki (approximately 285 km, 4 hours 30 mins)
- Make your way to Punakaiki - Pancake Rocks and Blowholes
- After you have explored Punakaiki continue onto Greymouth - The West Coast's Largest City
- Stay at The Ashley Hotel Greymouth - 3 Star Hotel - 1 night

Day 10 - Wednesday, 04 March 2026

- TranzAlpine Train - Greymouth to Christchurch
- Return your vehicle at the railway station and board the TranzAlpine train to Christchurch - transfer on arrival
- Stay at Distinction Christchurch Hotel - 4 Star Hotel - 1 night

Day 11 - Thursday, 05 March 2026

- Drive to Oamaru (approximately 250 km, 3 hours 15 mins)
- Collect your rental vehicle from the city and drive to Oamaru - Whitestone City
- Stay at Pen-y-bryn Lodge - Boutique Lodge - 1 night
- Enjoy the Oamaru Blue Penguin Colony - Premium Evening Tour

Daily Summary

Day 12 - Friday, 06 March 2026

- Drive to Dunedin (approximately 115 km, 2 hours)
- Drive to Dunedin - The Edinburgh of the South
- Royal Albatross Centre - Albatross Classic Tour
- Stay at Distinction Dunedin Hotel - 4 Star Hotel - 2 nights
- Monarch Wildlife Cruises - Otago Peninsula Wildlife Cruise

Day 14 - Sunday, 08 March 2026

- Drive to Bluff (approximately 230 km, 3 hours 15 mins)
- Travel to Bluff - Gateway to Stewart Island
- One Way Ferry from Bluff to Stewart Island (Oban)
- Take the ferry over to Stewart Island - New Zealand's Best-Kept Secret
- Stay at Stewart Island Lodge - Boutique Lodge - 2 nights

Day 15 - Monday, 09 March 2026

- Ulvas Guided Walks - Ulva Island Half Day Guided Walk and Eco Tour - Birding and Botany
- Ulvas Guided Walks - Evening Kiwi Spotting on Stewart Island

Day 16 - Tuesday, 10 March 2026

- Take the ferry back to Bluff and travel to Invercargill to meet your onward flight
- One Way Ferry from Stewart Island (Oban) to Bluff

Day 1 - Monday, 23 February 2026

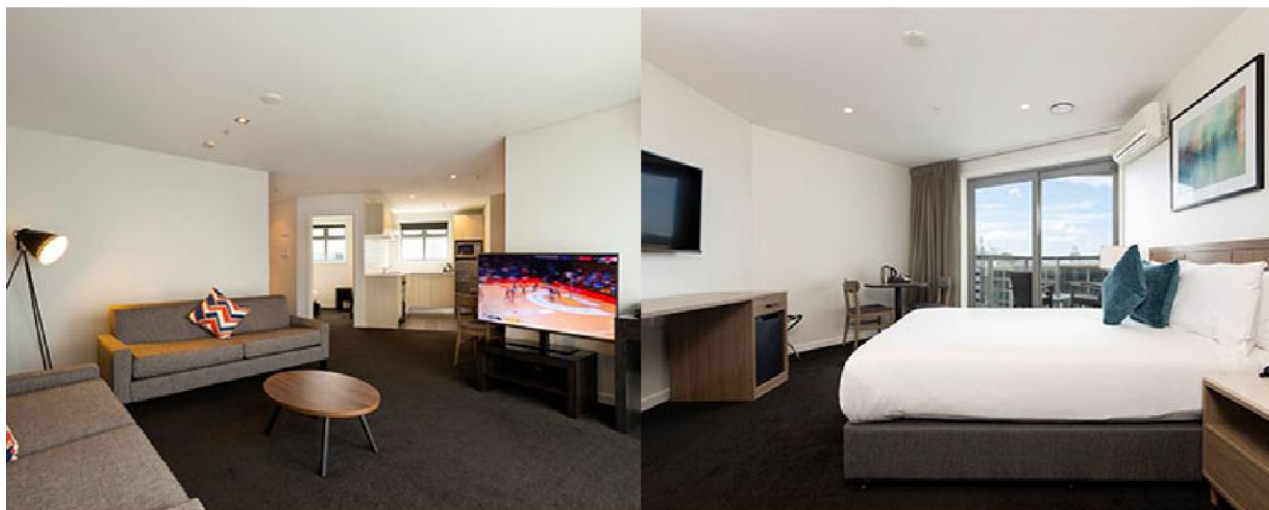
Welcome to Auckland! On arrival you will be transferred to your accommodation

Known as the "City of Sails," Auckland is famous for its stunning waterfront, diverse culture, and vibrant urban life. Located between Waitemata and Manukau Harbours, it features numerous islands and scenic coastlines along the Tasman Sea and Pacific Ocean. The city's skyline showcases iconic structures amid lush green hills and volcanic cones. As New Zealand's economic and cultural hub, Auckland boasts a thriving arts scene, innovative cuisine, and a strong community spirit.



Stay at Oaks Auckland (formerly Nesuto Stadium) - Premium Motel/Apartment - 2 nights

Experience urban sophistication at Oaks Auckland, located in the vibrant heart of Auckland's CBD. This refined property seamlessly blends luxury and convenience, offering a range of elegant hotel rooms and fully equipped self-contained apartments with modern kitchens. Perfectly positioned just steps from Spark Arena, Britomart Entertainment & Transport Hub, Commercial Bay and the Auckland Waterfront, you'll be ideally placed to explore the city's top attractions, shopping, and dining. Each apartment features contemporary design and high-end furnishings for a truly comfortable experience.



Day 2 - Tuesday, 24 February 2026

Bush and Beach - Wilderness Experience Nature Tour

Your adventure begins with a hotel pickup and a visit to the Arataki Visitor Centre, the gateway to Auckland's largest native rainforest. Take in breathtaking views of the lush forest, harbors, and city skyline. Explore Maori culture through traditional carvings as your guide shares their significance. Then, embark on an easy walk through the forest, encountering unique flora like the silver fern, manuka, and towering kauri trees, learning about their Maori uses. Continue to the rugged west coast, stopping at a viewpoint over Piha Beach and the Tasman Sea. Finish with a scenic drive back to Auckland.



Day 3 - Wednesday, 25 February 2026

Drive to Waitomo (approximately 190 km, 2 hours 30 mins)

This morning collect your rental vehicle and make your way to Waitomo - Cave Country

The Waikato region, south of Auckland, features lush, fertile landscapes and more than meets the eye. It is home to extensive underground caverns, a major tourist attraction. The charming town of Waitomo serves as the gateway to these subterranean wonders, with its famous caves showcasing nature's beauty and craftsmanship over the last hundred thousand years. Waitomo's caves are among New Zealand's most impressive natural formations, offering a unique glimpse into the region's geological history.



Waitomo Glow Worm Caves - Triple Cave Combo - Glowworm, Ruakuri and Aranui Caves

Deep beneath the heart of Waikato lies a breathtaking network of caves, each offering a unique underground experience. Enjoy a guided tour through all three remarkable sites. The famous Glowworm Cave enchants with thousands of tiny lights sparkling overhead, a towering limestone shaft, and a vast underground cathedral. Ruakuri Cave impresses with its spiral entrance, cascading waterfalls, and delicate limestone formations. Aranui Cave, nestled in native forest, is the smallest and most tranquil, featuring intricate natural formations and a serene atmosphere. Together, these caves showcase the beauty and wonder of Waitomo's hidden world.



Stay at Rural Tours. Country Lifestyle Experiences - Unique Stay - 1 night

Enjoy an overnight stay on a farm, experience daily farm activities, sharing the delight of a home-cooked dinner and a hearty breakfast. Highlights also include conversation with your hosts and relaxing in the wide open spaces of New Zealand's beautiful countryside. You will meet people who are genuinely interested in sharing their home, their working farm lifestyle, and themselves, with you. You will be accommodated in a guest room within the family home, or in some cases, in self contained accommodation on the farm. You will become part of the family for the duration of your stay, and treated as friends rather than guests.



Day 4 - Thursday, 26 February 2026

This morning travel approximately 2 hours to Tongariro

In Tongariro National Park, you'll find some of New Zealand's most iconic hikes, each offering incredible views and diverse landscapes. The famous Tongariro Crossing takes you through volcanic terrain and alpine landscapes, while shorter walks like the Taranaki Falls or Tawhai Falls provide stunning sights in just a few hours. For those seeking more adventure, the Tama Lakes or Mt Ruapehu Crater offer longer and more challenging hikes. Whether you're exploring craters, waterfalls, or alpine meadows, there's a hike here for every level, showcasing the beauty of this UNESCO World Heritage park.



Stay at Tongariro Crossing Lodge - 3 Star Hotel - 2 nights

Nestled in the heart of National Park Village, Tongariro Crossing Lodge offers a charming retreat for adventurers and nature lovers. This boutique lodge provides cozy, well-appointed accommodations with stunning views of the Tongariro National Park. Guests can relax in the peaceful garden, enjoy a hearty breakfast before setting out on the famous Tongariro Alpine Crossing, or unwind by the fireplace after a day of exploration. With its warm hospitality and convenient location, Tongariro Crossing Lodge is the perfect base for experiencing the natural beauty and outdoor activities of the region.



Day 5 - Friday, 27 February 2026

Adrift Tongariro - Half Day Tongariro Alpine Guided Group Walk

Experience the majestic Tongariro National Park and feel the crisp mountain air as you follow your expert guide across the Tongariro Alpine Crossing for a view of the volcanic landscape during this 4-hour trek. Soak in the snowy white expanse in winter or the lush, blooming beauty during summer. Learn about the secrets and history of the landscape around you. Travel through natural wonders that leave you inspired and breathless. Notice the gradual change in flora as you climb higher in altitude. Witness the grandeur of Mount Ngauruhoe, which lies between Mount Tongariro, Mount Ruapehu.



Day 6 - Saturday, 28 February 2026

Drive to Wellington (approximately 345 km, 4 hours 30 mins)

Travel to Wellington - The Arts Capital

In between a stunning harbour and rolling hills, Wellington is surrounded by a dramatic landscape of steep ridges and rugged coastlines. This capital city is known for its beautiful scenery and lively atmosphere, serving as a key centre for culture and politics, home to national institutions. The striking topography features lush valleys and breathtaking viewpoints, creating a unique setting. Wellington's vibrant arts scene and growing food culture enhance its reputation as a dynamic urban hub, celebrated for creativity and innovation.



Stay at Copthorne Hotel Oriental Bay Wellington - 4 Star Hotel - 1 night

Overlooking Wellington's picturesque harbour, Copthorne Hotel Wellington Oriental Bay, offers a luxurious stay in the heart of the city. The stylish and spacious rooms equipped with modern amenities to ensure a comfortable and relaxing experience. Indulge in exceptional dining at the hotel's on-site restaurant, where a diverse menu showcases fresh, locally sourced ingredients. Just a short stroll from the vibrant waterfront, iconic attractions, and cultural landmarks, this hotel is the perfect base for exploring the nations capital.



Day 7 - Sunday, 01 March 2026

Return your rental vehicle at Wellington Airport and fly to Nelson

Known as the sunniest city in New Zealand, Nelson enjoys an impressive number of sunshine hours each year, creating a warm atmosphere. Surrounded by stunning landscapes, it is bordered by the Tasman Bay to the north and the rugged Southern Alps to the west. This unique location offers breathtaking views and diverse ecosystems. The city is celebrated for its vibrant arts scene, local wineries, and fresh produce, making it a hub of creativity and culinary delights.



Drive to Abel Tasman (approximately 60 km, 1 hour 15 mins)

On arrival into Nelson collect your rental vehicle and travel to Abel Tasman National Park - A National Treasure

Abel Tasman National Park is famous for its golden beaches, clear turquoise waters, and lush native forests. The park's coastline is dotted with pristine sandy coves and sheltered tidal inlets. Known for its breathtaking natural beauty, the park offers a network of famous walking tracks that wind through coastal and forest landscapes. Abel Tasman is celebrated for its stunning scenery, diverse wildlife, and tranquil atmosphere, making it a top destination for nature lovers.



Stay at Awaroa Lodge - 4 Star Hotel - 2 nights

Tucked away in the stunning Abel Tasman National Park, Awaroa Lodge presents an unparalleled retreat amidst pristine waterways and lush native forests. Accessible only by foot, water taxi, or scenic flight, the journey to the Lodge is as enchanting as the destination itself. Surrounded by pristine white-sand beaches, seal colonies, wetlands, and vibrant birdlife, the Lodge is a true haven for nature enthusiasts. The main Lodge exudes a warm and inviting atmosphere, featuring a cozy lounge and a well-curated library. Choose from a range of accommodations, from cozy, comfortable rooms to contemporary, architecturally designed suites built over the wetlands. The on-site Restaurant offers exquisite dishes featuring produce grown in the Lodge's own gardens, while the outdoor pizzeria provides a delightful dining experience set against breathtaking views. The bar offers the perfect spot to unwind after a day of exploration, and for those seeking extra pampering, the Day Spa invites relaxation and rejuvenation. Enjoy the pristine beauty of Awaroa Beach, explore the picturesque grounds and marvel at the rich birdlife and mesmerizing night skies. Committed to sustainability, the Lodge is self-sufficient with its own power supply and offers satellite WiFi, blending modern comforts seamlessly with the serene beauty of this secluded paradise.



Day 8 - Monday, 02 March 2026

Enjoy your free day at leisure in Abel Tasman National Park

Abel Tasman National Park is a stunning destination where the day can be filled with a variety of experiences. You can spend your time exploring the coastline, walking through lush forests, or relaxing on golden beaches. Those looking for adventure can enjoy water-based activities, discovering hidden coves and observing the abundant wildlife. The park's diverse landscape also offers opportunities for scenic views from above or across the water. Whether you prefer peaceful reflection or more active pursuits, the park offers a perfect balance of natural beauty and excitement.



Day 9 - Tuesday, 03 March 2026

Drive to Punakaiki (approximately 285 km, 4 hours 30 mins)

Make your way to Punakaiki - Pancake Rocks and Blowholes

Punakaiki is located on the rugged West Coast of New Zealand, surrounded by dense rainforest and the crashing waves of the Tasman Sea. It's famous for the Pancake Rocks, a stunning collection of layered limestone formations sculpted by the elements over millions of years. The area is also renowned for its blowholes, which send impressive sprays of water into the air, especially during high tide or stormy weather, creating a dramatic coastal spectacle.



After you have explored Punakaiki continue onto Greymouth - The West Coast's Largest City

Greymouth, the largest town on the West Coast, is located between the rugged Southern Alps and the Tasman Sea. This striking location boasts dramatic coastal cliffs and lush rainforests, making it a gateway to breathtaking natural landscapes. The area is renowned for its rich geological history, including unique rock formations and significant fossil sites. Additionally, Greymouth's waters are frequented by Hector's dolphins and various seabirds, reflecting the diverse marine life that thrives along this picturesque coastline.



Stay at The Ashley Hotel Greymouth - 3 Star Hotel - 1 night

The Ashley Hotel Greymouth is a 5-minute drive from Greymouth's town centre and Greymouth Railway Station. The Hotel is framed by rugged coast, rainforest and the magnificent Southern Alps and provides convenience and comfort for travellers. With quality hotel accommodation, great food, and friendly, professional service, The Ashley has everything for the discerning traveller. Conclude your evenings by experiencing those amazing sunsets, a short walk to the nearby beach.



Day 10 - Wednesday, 04 March 2026

TranzAlpine Train - Greymouth to Christchurch

Rated as one of the top six scenic train journeys in the world, the famous Tranz Alpine train will take you deep into the heartland of the South Island... a coast to coast journey through some of the world's most extreme and beautiful scenery. The Tranz Alpine winds its way over massive viaducts and through spectacular gorges and river valleys, tracking slowly across the country's greatest mountain range, the Southern Alps. It stops in the heart of the Southern Alps at Arthur's Pass before descending to the Canterbury Plains and on to Christchurch.



Return your vehicle at the railway station and board the TranzAlpine train to Christchurch - transfer on arrival

Christchurch is the city of renewal, where urban innovation meets heritage. Nestled between the majestic Southern Alps and the expansive Canterbury Plains, this dynamic city offers fresh experiences at every turn. Expect vibrant street art, cutting-edge projects, and a thriving hospitality scene amid lush green spaces. Known as "The Garden City", Christchurch blends modern architecture with some of New Zealand's oldest buildings, featuring inviting gardens and scenic parks that welcome all who seek to explore its charm.



Stay at Distinction Christchurch Hotel - 4 Star Hotel - 1 night

The Distinction Christchurch Hotel offers a sophisticated urban escape, effortlessly combining modern luxury with a warm, inviting atmosphere. Located in the heart of Cathedral Square, it's within walking distance of top attractions like the Avon River, Christchurch Botanical Gardens, and Cashel Mall. The hotel's stylish rooms boast sleek, contemporary design and cutting-edge amenities, ensuring the highest level of comfort. Savour delectable dishes and signature cocktails at the Gumption Restaurant & Bar, or stay fit in the fully-equipped gym. With complimentary Wi-Fi and exceptional service, the hotel is the perfect retreat for exploring this vibrant city.



Day 11 - Thursday, 05 March 2026

Drive to Oamaru (approximately 250 km, 3 hours 15 mins)

Collect your rental vehicle from the city and drive to Oamaru - Whitestone City

Oamaru, situated on the South Island's eastern coast, is surrounded by fertile plains and the Pacific Ocean. The town is renowned for its distinctive Victorian architecture, built from local limestone, and is home to some of New Zealand's best-preserved heritage buildings. Oamaru's natural beauty is equally striking, with rolling hills and coastal cliffs. The area is especially famous for its unique blue and yellow-eyed penguin colonies that inhabit the nearby shores.



Stay at Pen-y-bryn Lodge - Boutique Lodge - 1 night

Perched on a hilltop overlooking Oamaru, Pen-y-bryn Lodge offers unparalleled luxury and breathtaking views of the Pacific Ocean. This historic Victorian mansion, meticulously restored, combines old-world elegance with modern comforts. Each room is uniquely appointed with antiques and fine furnishings, ensuring a tranquil retreat. Guests enjoy gourmet dining showcasing local ingredients, complemented by an extensive wine cellar. Relax in the landscaped gardens, or explore the nearby Oamaru Gardens and Blue Penguin Colony. With its impeccable service and serene ambiance, Pen-y-bryn Lodge is the perfect destination for discerning travelers seeking an unforgettable experience on New Zealand's South Island.



Enjoy the Oamaru Blue Penguin Colony - Premium Evening Tour

Oamaru is home to the little blue penguin, the smallest species of penguin in the world. Known for its nocturnal nature, this penguin is most active on land after dark. The Oamaru Blue Penguin Colony offers an exceptional opportunity to watch these penguins return from a day at sea. Visitors can observe the penguins as they arrive on the beach, scale the steep rocks, and make their way inland to their burrows. This unique experience allows guests to witness the penguins' natural behavior in a safe, protected environment, providing a memorable and rare glimpse into their lives.



Day 12 - Friday, 06 March 2026

Drive to Dunedin (approximately 115 km, 2 hours)

Drive to Dunedin - The Edinburgh of the South

Dunedin, located on New Zealand's South Island, is a well-preserved Victorian city known for its diverse architectural styles, from Tudor to Neo-Gothic. Founded by Scottish immigrants, its name reflects its heritage, as "Dunedin" is derived from the Gaelic name for Edinburgh. Surrounded by the stunning landscapes of the Otago Peninsula and the Pacific Ocean, the city is a gateway to unique marine life, including penguins, seals, and albatrosses, offering a captivating blend of history and natural beauty.



Royal Albatross Centre - Albatross Classic Tour

Visit the Royal Albatross Centre and get an exceptional chance to get up close to the amazing world of the Royal Albatross. An insightful guided tour includes a short film, explanation of the Albatross life cycle and exclusive viewing of the world's only mainland Royal Albatross breeding colony from the private observatory situated on the wildlife reserve.



Stay at Distinction Dunedin Hotel - 4 Star Hotel - 2 nights

Housed within the historic 1937 Chief Post Office building, the Distinction Dunedin Hotel epitomizes sophisticated luxury in the heart of Dunedin. Just a short walk from the city's vibrant cultural and shopping districts, this elegantly renovated hotel offers premier accommodations featuring cloud-like beds, microwave, washer/dryer and indulgent dual fixture walk-in rain showers. Enjoy modern amenities including a state-of-the-art fitness centre and complimentary WiFi. Experience the chic ambiance of the Post Bar or savor exceptional cuisine at Parcels Restaurant, open daily for breakfast, lunch, high tea, and dinner. For a unique dining experience, explore the original vaults of the former Chief Post Office, now transformed into exclusive private dining rooms. With its tastefully appointed rooms and suites, the Distinction Dunedin Hotel provides a tranquil retreat complemented by stunning views of the city or the surrounding hills. It's the ideal destination for those seeking a refined and unforgettable stay in New Zealand's charming southern city.



Monarch Wildlife Cruises - Otago Peninsula Wildlife Cruise

Enjoy a scenic cruise along Otago Harbour's rugged coastline, with stunning views of Aramoana Beach's tidal sandflats, where sea lions bask in the sun. Discover military relics, including lookout posts and gun emplacements, now popular with local fishermen. Marvel at the world's only mainland royal albatross colony and enjoy breathtaking views of the historic Taiaroa Head lighthouse. Get close to rocky outcrops teeming with New Zealand fur seals, and venture into the Pacific Ocean for rare sightings of ocean birds, blue penguins, dolphins, and more. This unforgettable journey blends natural beauty, wildlife, and fascinating history.



Day 14 - Sunday, 08 March 2026

Drive to Bluff (approximately 230 km, 3 hours 15 mins)

Travel to Bluff - Gateway to Stewart Island

Bluff - Pearl of the South - Home of the world famous Bluff Oyster, and the oldest continuously occupied European settlement in New Zealand! Bluff is located at the very south of the South Island, New Zealand, in the province of Southland and is the 'Gateway to Stewart Island'. Stirling Point, with its famous signpost and walking tracks, is the beginning of State Highway 1 which traverses the length of the country to Cape Reinga in the far north - the journey really does begin here in Bluff!



One Way Ferry from Bluff to Stewart Island (Oban)

Enjoy a scenic ferry transfer from Bluff to Stewart Island. Discover the island's lush forests, rugged coastline, and pristine golden beaches, home to diverse marine life and native birds. Most of Stewart Island is part of Rakiura National Park, with the quaint township of Oban as its main settlement.



Take the ferry over to Stewart Island - New Zealand's Best-Kept Secret

It is almost a cliché to call it one of New Zealand's best-kept secrets, but given that so few people are aware of its unspoiled tranquillity, it probably deserves this label more than any other place in the country. Only 1% of the island is inhabited -- the rest is given over to natural native bush, exquisite white-sand beaches, bird sanctuaries, and rugged mountains. All this makes it a naturalist's and trumper's paradise and the perfect place for a remote yet accessible holiday. You need to be here only a few hours before the rest of the world melts away and you find yourself adopting the unhurried, laid-back approach of the locals.



Stay at Stewart Island Lodge - Boutique Lodge - 2 nights

Nestled in native bush, Stewart Island Lodge offers a peaceful sanctuary from the modern world. Located just five minutes walk from the Stewart Island's small village, this up-market Bed and Breakfast is private and secluded with commanding views of Halfmoon Bay and the surrounding ocean. The lodge's grounds are home to many native birds, including kaka (native parrots), which can be viewed from the lodge's terrace.



Day 15 - Monday, 09 March 2026

Ulvas Guided Walks - Ulva Island Half Day Guided Walk and Eco Tour - Birding and Botany

Begin with a short boat ride across the open sea to Ulva Island, a pristine sanctuary teeming with life. Your guide will lead you along well-maintained forest tracks through lush, ancient rainforest, offering fascinating insights into the island's rich natural history. The pace of the walk is set by the birds, allowing time to enjoy and photograph rare and vibrant species. You may encounter the Stewart Island Weka, South Island Saddleback, Tomtit, Rifleman, Robins, Brown Creeper, Tui, Kaka, Fantail, NZ Pigeon, Yellowhead, Bellbird, and Parakeets (both yellow and red-crowned) in this southernmost bird sanctuary.



Ulvas Guided Walks - Evening Kiwi Spotting on Stewart Island

Ulva's Guided Walks holds exclusive rights to conduct evening Kiwi Spotting tours at Mamaku Point Conservation Reserve on Stewart Island. After sunset, with minimal light pollution in the area, the night sky is often breathtaking, while kiwi forage and snuffle nearby. At certain times of the year, the calls of penguins and petrels can be heard, adding to the atmosphere. Most evenings, the distinctive two-tone call of the Morepork echoes through the surrounding native forest, creating a truly immersive experience.



Day 16 - Tuesday, 10 March 2026

Take the ferry back to Bluff and travel to Invercargill to meet your onward flight

Today we say farewell. There may be time for some last minute excursions or shopping before you head home. We know you will enjoy your New Zealand holiday and our promise is to make your travels through New Zealand as hassle-free and hospitable as possible - ensuring that today you leave with a camera full of photos, and huge smiles on your faces when recalling your time in New Zealand! Have a great homeward journey, farewell and hope to see you again soon in Aotearoa, New Zealand.



One Way Ferry from Stewart Island (Oban) to Bluff

Enjoy a relaxing and scenic Stewart Island Ferry transfer from Oban to Bluff after your unforgettable island adventure. This comfortable and convenient service offers the perfect opportunity to unwind and reflect on Stewart Island's stunning landscapes and wildlife as you make your way back to the mainland.



Inclusions

Transport

Car Hire

- Compact SUV, Kia Stonic or Similar

Inclusions:

- Unlimited kilometres
- G.S.T (goods and services tax)
- Excess Reduction down to nil
- Airport Fee

Exclusions:

- One Way Rental Fees (if applicable)
- Additional Driver Fee (if applicable)
- Fuel
- Tyre and windscreen cover
- Other optional extras (child safety seats, booster seats, ski/snowboard racks, etc)
- GPS Unit (Navigational System)

Driver's License: Drivers must be at least 21 years old and have a valid, non-probationary driver's license from their home country. If the license is not in English and includes endorsements, it must be accompanied by either an [International Driver Permit](#) or an NZTA approved translation.

Credit Card: A credit / debit card issued by a bank in the renter's name is required at time of collection. When a debit card is presented, it must either be a Visa or Master debit card, issued by a bank in the renter's name.

Security Deposit: At the start of your rental, a minimum of \$100 NZD bond will be charged plus total value of any optional extras selected.

Terms and Conditions: All rentals are subject to the Budget Terms and Conditions on the Rental Agreement. Please accept these terms and conditions before renting with Budget.
<https://www.budget.co.nz/en/terms-and-conditions>

Ferry

- One Way Ferry from Bluff to Stewart Island (Oban)
- One Way Ferry from Stewart Island (Oban) to Bluff

Train

- TranzAlpine Train - Greymouth to Christchurch

Transfers

- Private Transfer from Auckland Airport to Accommodation
- Private Transfer from Christchurch Railway Station to Accommodation

Accommodation

- Auckland: Oaks Auckland (formerly Nesuto Stadium), 1 Bedroom Apartment - Includes Breakfast - Premium Motel/Apartment - 2 nights
- Waitomo: Rural Tours. Country Lifestyle Experiences, Waitomo/Te Kuiti Farmstay - Includes Breakfast, Dinner and Farm Activities - Unique Stay - 1 night
- Waimarino (NatP): Tongariro Crossing Lodge, Jerusalem Suite - 3 Star Hotel - 2 nights
- Wellington: Copthorne Hotel Oriental Bay Wellington, Deluxe Harbour View Room - Includes Breakfast - 4 Star Hotel - 1 night
- Awaroa Bay: Awaroa Lodge, Standard Plus Room - 4 Star Hotel - 2 nights
- Greymouth: The Ashley Hotel Greymouth, Executive Hotel Room - 3 Star Hotel - 1 night
- Christchurch: Distinction Christchurch Hotel, Classic King Room - 4 Star Hotel - 1 night
- Oamaru: Pen-y-bryn Lodge, Victoria Room - Includes Breakfast - Boutique Lodge - 1 night
- Dunedin: Distinction Dunedin Hotel, Studio - Includes Breakfast - 4 Star Hotel - 2 nights

- Stewart Island: Stewart Island Lodge , King Double Bed with Sea View - Includes Continental Breakfast - Boutique Lodge - 2 nights

Activities

- Auckland: Wilderness Experience Nature Tour
- Waitomo: Triple Cave Combo - Glowworm, Ruakuri and Aranui Caves
- Waimarino (NatP): Half Day Tongariro Alpine Guided Group Walk
- Oamaru: Enjoy the Oamaru Blue Penguin Colony - Premium Evening Tour
- Dunedin: Albatross Classic Tour
- Dunedin: Otago Peninsula Wildlife Cruise
- Stewart Island: Ulva Island Half Day Guided Walk and Eco Tour - Birding and Botany
- Stewart Island: Evening Kiwi Spotting on Stewart Island

Quote

US\$ 5815.00 per person at today's exchange rates- Rate for 2026 high season

(Based on a touring party of 2 people)

