

Hotel Radisson Plaza Resort Tahiti - 4*

Set in lush gardens at Lafayette Beach on the north east coast, the Radisson Plaza Resort Tahiti is the idyllic retreat boasting direct access to a unique volcanic black sanded beach, with stunning views on Matavai Bay, the ocean, and the sunset.

Located just 7kms from Papeete city centre, the resort provides convenient access to some of the best local attractions.

Guests, be it honeymooners, businessmen, or just vacationers, enjoy the resort wide range of free activities, Le Spa, the panoramic swimming pool and jacuzzi.

The Ocean View Jacuzzi Rooms, with the private jacuzzi on the terrace, are definitely worth visiting...

Location

20 minutes from airport by bus

Car rental at your disposal

Free shuttle to the city : Monday to Friday & Saturday morning

Welcome amenity "oshiburi" refreshing towel upon arrival

Specified Welcome Gifts may be replaced without notice by others with same value



Room Categories

16	Standard Ocean View Room	2A+1Inf	Available until March 31st, 2013
25	Deluxe Ocean View Room	2A+1Inf	
26	Ocean View Jacuzzi Room	2A+1Inf	Our Preferred Category!
26	Ocean View Suite	3A+1C+1Inf	Wheelchair access
14	Ocean View Duplex	3A+1Inf	

Check-in 14H00 - Check-out 11H00

Dining - Entertainment Features

Restaurant HITI MAHANA 200 seats - Polynesian, European & South East Asian Cuisine

Breakfast 06h30 - 10h00, Lunch 12h00 - 14h30, Dinner: 18h30 - 22h00

Theme Dinner with Polynesian show on Saturday

Restaurant THE 5 SENS 20 seats - Gourmet and Fusion Cuisine

Open Wednesday to Saturday for Dinner only. 18h30 - 22h00 on reservation

TERRACE BAR Poolside, Snack 11h00 - 22h00

Room Service 06h00 - 22h00

LAFAYETTE BAR 125 seats

Happy Hour 17h30 - 18h30 with live music

Friday 16h00 - 00h00 & Saturday 16h00 - 23h00

POOL BAR 11h00 - 22h00

Conferencing Info

1 ballroom room of 520m² with a capacity of up to 600 guests with a flexible structure without columns and convertible
A conference room of 120m² with a capacity of 100 persons
3 rooms of 36 and 65m² with a capacity of 30 persons

Facilities and Activities

Info Internet Free internet access

Tours and activities desk open 08h00 - 12h00

Le Spa by Radisson Large choice of massages & treatments, sauna, steam room. Open everyday 9h30 - 20h00

We strongly recommend that you pre-book some activities in advance, only way to guarantee availability.

Free activities: Aquagym, Beach Towels Provided, Fitness Center, Hammam, Snorkeling Equipment, Sauna, Tahitian Dance Lessons, Yoga,

Other Facilities: Baby Sitting, Beauty Salon, Boutiques, Business Center, Ice Machine, Internet Access / Wifi, Jacuzzi, Laundry Service, Shuttle Bus From/To Town, Spa, Swimming Pool, Tour Desk, Kids Club,

Exclusive Services

Romantic Touches - Cheese platter, Fruit Basket, Champagne, Wine, Necklace of flowers...

Romantic Dinners - Dinner under the stars at waterfront restaurant, ...

Wedding Ceremonies - for a traditional Princess Wedding

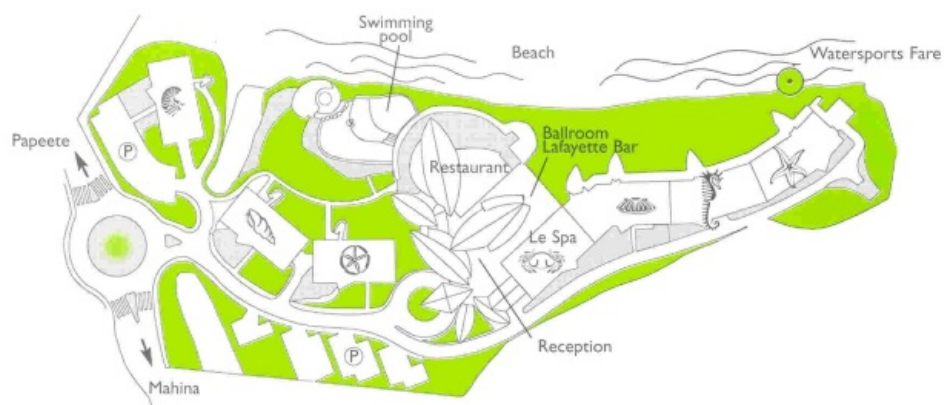
Children

Kid's Club with painting, clay sculpturing, arts and crafts ateliers, Cinema, Electronic games as Wii & Playstation, Entertainment and activities, billiards, ping pong, trampoline, table soccer. Qualified staff.

Important Remarks

Information on this Factsheet is subject to change without prior notice.

Accepted Credit Cards : Visa, Mastercard, American Express, Diners Club, JCB



Room Facilities

Air Conditionning, Bath tub, Cable TV, Coffee / Tea Facilities, Hair Dryer, In Room Internet Access, Iron, Mini Bar, Radio, In Room Safety Box, Telephone,

Standard Ocean View Room

These spacious, elegant and comfortable rooms, located on the first floor, feature a 13m² balcony overlooking magical Lafayette Beach, with breathtaking views of Matavai Bay and the sunsets over the island of Moorea. The décor is a tasteful mix of contemporary style and Polynesian influences.



3 Rooms are especially equipped for the disabled.
 Categorie available until March 31st, 2013

Maximum Occupancy: 2A+1Inf

Bed Configuration: 1 king bed or 2 single beds (+ 1 baby bed)

More Info: Surface 42.23m²

Additional facilities:

Deluxe Ocean View Room

The Deluxe Ocean View room presents the same characteristics as the Standard rooms, but are located on the upper floors.

Maximum Occupancy: 2A+1Inf

Bed Configuration: 1 king bed or 2 single beds (+ 1 baby bed)

More Info: Surface 42.23m²

Additional facilities:



Ocean View Jacuzzi Room

Ocean View Jacuzzi Rooms are similar in style to the Ocean View Rooms. As an added bonus, delight in your own private Jacuzzi discreetly located behind wooden louvers on your Lanai balcony.



Maximum Occupancy: 2A+1Inf

Bed Configuration: 1 king bed or 2 single beds (+ 1 baby bed)

More Info: Surface 42.60m²

Additional facilities: Private Jacuzzi,

Ocean View Suite

These spacious and beautiful suites feature a separate bedroom, a large bathroom with a tub and a separate shower. The modern living space opens wide onto a private outdoor Lanai balcony offering a spectacular view of the ocean and beyond.

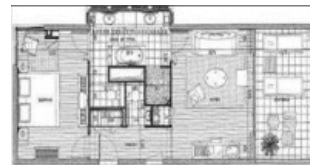
1 unit with wheelchair access

Maximum Occupancy: 3A+1C+1Inf

Bed Configuration: 1 king bed or 2 single beds + 1 sofa bed (+ 1 rollaway bed + 1 baby bed)

More Info: Surface room + terrace 73m²

Additional facilities: Balcony,



Ocean View Duplex

Situated on the top floor of the buildings, the Ocean View Duplex have a business area and lounge downstairs opening into a large Lanai. The bedroom is upstairs with vaste balcony and floor-to-ceiling windows ensuring the most spectacular views of the sunset.



Maximum Occupancy: 3A+1Inf

Bed Configuration: 1 king bed or 2 single beds + 1 sofa bed (+ 1 baby bed)

More Info: Surface room + terrace 62m²

Additional facilities: Balcony,
